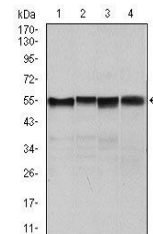


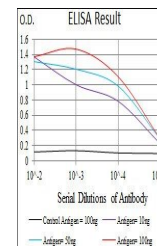
## Product Datasheet

### SLC2A4 Antibody (orb197880)

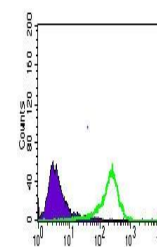
<b>Description</b>	Mouse monoclonal antibody to SLC2A4
<b>Species/Host</b>	Mouse
<b>Reactivity</b>	Human, Mouse
<b>Conjugation</b>	Unconjugated
<b>Tested Applications</b>	ELISA, FC, ICC, IHC, WB
<b>Immunogen</b>	Purified recombinant fragment of human SLC2A4 (AA: 224-353 ) expressed in E. Coli.
<b>Preservatives</b>	Ascitic fluid containing 0.03% sodium azide.
<b>Concentration</b>	1mg/ml
<b>Storage</b>	4°C; -20°C for long term storage. Avoid freeze/thaw cycles.
<b>Note</b>	For research use only
<b>Isotype</b>	Mouse IgG2b
<b>Clonality</b>	Monoclonal
<b>MW</b>	54.8kDa
<b>Entrez</b>	<b>6517</b>
<b>Dilution Range</b>	WB: 1/500 - 1/2000; IHC: 1/200 - 1/1000; ICC: 1/200 - 1/1000; RCM: 1/200 - 1/400; ELISA: 1/10000
<b>Expiration Date</b>	12 months from date of receipt.



Western blot analysis of NIH3T3 (Lane 1)...



Line graph illustrates about the Ag-Ab r...



Flow cytometric analysis of HeLa cells l...