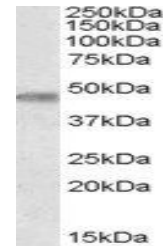


Product Datasheet

TOM1L1 antibody (orb19785)

Description	Goat polyclonal antibody to TOM1L1
Species/Host	Goat
Reactivity	Human
Conjugation	Unconjugated
Tested Applications	ELISA, WB
Target	TOM1L1 / SRCASM
Preservatives	Supplied at 0.5 mg/ml in Tris saline, 0.02% sodium azide, pH 7.3 with 0.5% bovine serum albumin. Aliquot and store at -20°C. Minimize freezing and thawing.
Storage	Aliquot and store at -20°C. Minimize freezing and thawing.
Note	For research use only
Application notes	ELISA: Peptide ELISA: antibody detection limit dilution 1:64000.WB: Approx 48kDa band observed in Human Brain (Cerebellum) lysates (calculated MW of 53.0kDa according to NP_005477.1). Recommended concentration: 0.3-1 µg/ml.
Protein Sequence	EQNKNQKEATNTTSE
Clonality	Polyclonal
MW	53
Entrez	10040
Dilution Range	ELISA: 1:64000, WB: 0.3-1 µg/ml
Expiration Date	12 months from date of receipt.



orb19785
(0.3ug/ml)
staining of
Human Br...