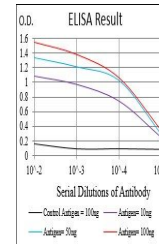


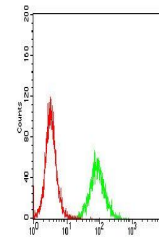
Product Datasheet

CCNE1 Antibody (orb197806)

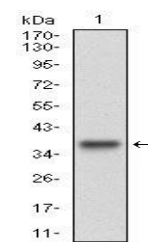
Description	Mouse monoclonal antibody to CCNE1
Species/Host	Mouse
Reactivity	Human, Mouse
Conjugation	Unconjugated
Tested Applications	ELISA, FC
Immunogen	Purified recombinant fragment of human CCNE1 (AA: 307-410) expressed in E. Coli.
Preservatives	Purified antibody in PBS with 0.05% sodium azide.
Concentration	1mg/ml
Storage	Maintain refrigerated at 2-8°C for up to 2 weeks. For long term storage store at -20°C in small aliquots to prevent freeze-thaw cycles.
Note	For research use only
Isotype	Mouse IgG1
Clonality	Monoclonal
MW	47kDa
Entrez	898
Dilution Range	RCM: 1/200 - 1/400; ELISA: 1/10000
Expiration Date	12 months from date of receipt.



Line graph illustrates about the Ag-Ab r...



Flow cytometric analysis of K652 cells l...



Western blot analysis of human CCNE1 usi...