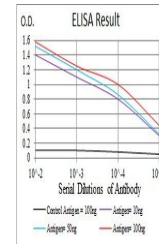


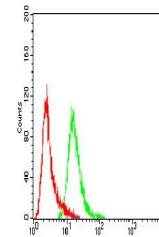
## Product Datasheet

### CSF1R Antibody (orb197764)

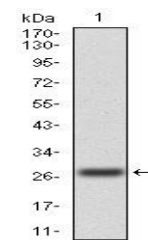
<b>Description</b>	Mouse monoclonal antibody to CSF1R
<b>Species/Host</b>	Mouse
<b>Reactivity</b>	Human
<b>Conjugation</b>	Unconjugated
<b>Tested Applications</b>	ELISA, FC
<b>Immunogen</b>	Purified recombinant fragment of human CSF1R (AA: 20-152) expressed in E. Coli.
<b>Preservatives</b>	Purified antibody in PBS with 0.05% sodium azide
<b>Concentration</b>	1mg/ml
<b>Storage</b>	4°C; -20°C for long term storage. Avoid freeze/thaw cycles.
<b>Note</b>	For research use only
<b>Isotype</b>	Mouse IgG1
<b>Clonality</b>	Monoclonal
<b>MW</b>	108kDa
<b>Entrez</b>	<b>1436</b>
<b>Dilution Range</b>	RCM: 1/200 - 1/400; ELISA: 1/10000
<b>Expiration Date</b>	12 months from date of receipt.



Line graph illustrates about the Ag-Ab r...



Flow cytometric analysis of Hela cells l...



Western blot analysis of human CSF1R usi...