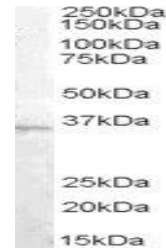


Product Datasheet

ASRGL1 antibody (orb19761)

Description	Goat polyclonal antibody to ASRGL1
Species/Host	Goat
Reactivity	Human
Conjugation	Unconjugated
Tested Applications	ELISA, WB
Target	ASRGL1 / ALP
Preservatives	Supplied at 0.5 mg/ml in Tris saline, 0.02% sodium azide, pH 7.3 with 0.5% bovine serum albumin. Aliquot and store at -20°C. Minimize freezing and thawing.
Storage	Aliquot and store at -20°C. Minimize freezing and thawing.
Note	For research use only
Application notes	ELISA: Peptide ELISA: antibody detection limit dilution 1:4000.WB: Approx 35kDa band observed in Human Testis lysates (calculated MW of 32.1kDa according to NP_001077395.1and NP_079356.3). Recommended concentration: 1-3 µg/ml.
Protein Sequence	EKHEKGAQKTDCQ
Clonality	Polyclonal
MW	32.1
Entrez	80150
Dilution Range	ELISA: 1:32000, WB: 1-3 µg/ml
Expiration Date	12 months from date of receipt.



Western blot analysis of Human Testis lysate...



Western blot analysis of Human Tonsil lysate...