

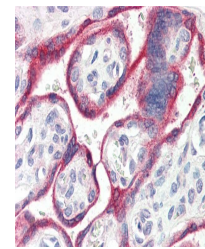
## Product Datasheet

### CYP19A1 antibody (orb19742)

<b>Description</b>	Goat polyclonal antibody to CYP19A1
<b>Species/Host</b>	Goat
<b>Reactivity</b>	Human
<b>Conjugation</b>	Unconjugated
<b>Tested Applications</b>	ELISA, IHC, WB
<b>Target</b>	Aromatase / CYP19A1
<b>Preservatives</b>	Supplied at 0.5 mg/ml in Tris saline, 0.02% sodium azide, pH 7.3 with 0.5% bovine serum albumin. Aliquot and store at -20°C. Minimize freezing and thawing.
<b>Storage</b>	Aliquot and store at -20°C. Minimize freezing and thawing.
<b>Note</b>	For research use only
<b>Application notes</b>	ELISA: Peptide ELISA: antibody detection limit dilution 1:128000.WB: Approx 50-55kDa band observed in Human Placenta lysates (calculated MW of 57.9kDa according to NP_000094.2 and NP_112503.1). Recommended concentration: 0.1-0.3 µg/ml.
<b>Protein Sequence</b>	HDLSLHPDETKN
<b>Clonality</b>	Polyclonal
<b>MW</b>	57.9
<b>Entrez</b>	<b>1588</b>
<b>Dilution Range</b>	ELISA: 1:128000, WB: 0.1-0.3 µg/ml, IHC-P: 4 µg/ml
<b>Expiration Date</b>	12 months from date of receipt.



orb19742 (0.1ug/ml) staining of Human Pl...



Immunohistochemical staining of Human Pl...