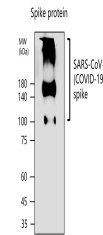


## Product Datasheet

# SARS-CoV-2 (COVID-19) Spike Protein S1-NTD Antibody (orb1973132)

<b>Description</b>	SARS-CoV-2 (COVID-19) Spike Protein S1-NTD Antibody
<b>Species/Host</b>	Rabbit
<b>Reactivity</b>	Virus
<b>Conjugation</b>	Unconjugated
<b>Tested Applications</b>	IF, NeA, WB
<b>Target</b>	SARS-CoV-2 (COVID-19) Spike Protein S1-NTD
<b>Storage</b>	Long time storage is recommended at -20°C PBS (Ph7.4), 20% Glycerol. 0.025% ProClin 300 was added as a preservative Gently mix before use. Optimal concentrations and conditions for each application should be determined by the user
<b>Note</b>	For research use only
<b>Clonality</b>	Polyclonal
<b>Dilution Range</b>	Western Blot 1:2000 – 1:15000 Immunofluorescence 1:500 – 1:1000 Neutralizing Reported in the literature, not verified in house.
<b>Expiration Date</b>	12 months from date of receipt.



Western blot analysis of SARS-CoV-2 (COV...