

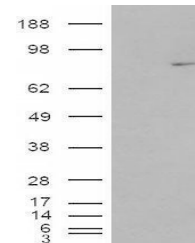
Product Datasheet

MEPCE antibody (orb19720)

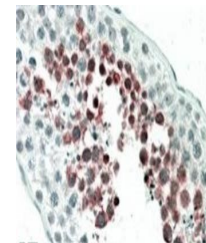
Description	Goat polyclonal to MEPCE
Species/Host	Goat
Reactivity	Human, Mouse, Rat
Conjugation	Unconjugated
Tested Applications	ELISA, IHC, WB
Target	MEPCE
Preservatives	Supplied at 0.5 mg/ml in Tris saline, 0.02% sodium azide, pH 7.3 with 0.5% bovine serum albumin. Aliquot and store at -20°C. Minimize freezing and thawing.
Storage	Aliquot and store at -20°C. Minimize freezing and thawing.
Note	For research use only
Application notes	ELISA: Peptide ELISA: antibody detection limit dilution 1:2000.WB: Approx. 75kDa band observed in Rat Testis lysates (calculated MW of 74.4kDa according to Human NP_062552.2 and 75.3kDa according to Rat XP_222048.4). In transfected HEK293 transiently expressing Human MEPCE a band of approx. 75kDa is observed. This band is not observed in the non-transfected HEK293. Recommended concentration: 1-3 µg/ml.
Protein Sequence	KQQRKFQYGN YCK
Clonality	Polyclonal
MW	74.4
Entrez	56257
Dilution Range	ELISA: 1:2000, WB: 1-3 µg/ml, IHC-P: 5-10 µg/ml
Expiration Date	12 months from date of receipt.



Western blot analysis of Rat Testis lysa...



Western blot analysis of HEK293 lysate u...



Immunohistochemical staining of Human Te...