

---

## Product Datasheet

### RPL22 antibody (orb19675)

**Description**

Goat polyclonal antibody to RPL22

**Species/Host**

Goat

**Reactivity**

Human, Mouse, Rat

**Conjugation**

Unconjugated

**Tested**

ELISA, IHC

**Applications**
**Target**

Ribosomal protein L22

**Preservatives**

Supplied at 0.5 mg/ml in Tris saline, 0.02% sodium azide, pH 7.3 with 0.5% bovine serum albumin. Aliquot and store at -20°C. Minimize freezing and thawing.

**Concentration**

3-6 µg/ml

**Storage**

Aliquot and store at -20°C. Minimize freezing and thawing.

**Note**

For research use only

**Application notes**

ELISA: Peptide ELISA: antibody detection limit dilution 1:16000. WB: Preliminary experiments gave bands at approx 17-18kDa and 25kDa in Human Liver lysates after 0.5 µg/ml antibody staining. Please note that currently we cannot find an explanation in the literature for the bands we observe given the calculated size of 14.8kDa according to NP\_000974.1. Both detected bands were successfully blocked by incubation with the immunizing peptide (and BLAST results with the immunizing peptide sequence did not identify any other proteins to explain the additional bands). We would appreciate any feedback from people in the field - have any results been reported with other antibodies/lysates Have any further splice variants/modified forms been reported

**Protein Sequence**

SKESYELRYFQINQ

**Clonality**

Polyclonal

**MW**

14.8

**Entrez**
**6146**
**Dilution Range**

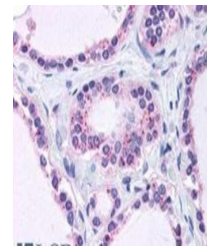
ELISA: 1:16000, WB: 0.5 µg/ml, IHC-P: 3.75 µg/ml

**Expiration Date**

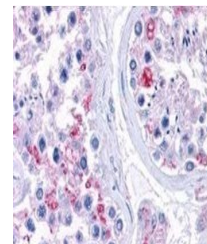
12 months from date of receipt.



Immunohistochemical staining of Human Co...



Immunohistochemical staining of Human Th...



Immunohistochemical staining of Human Te...