

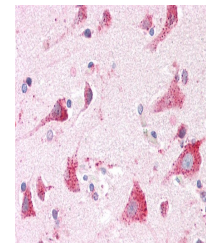
## Product Datasheet

### ARSA antibody (orb19647)

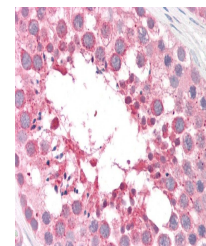
<b>Description</b>	Goat polyclonal antibody to ARSA
<b>Species/Host</b>	Goat
<b>Reactivity</b>	Human, Mouse, Rat
<b>Conjugation</b>	Unconjugated
<b>Tested Applications</b>	ELISA, FC, IF, IHC, WB
<b>Target</b>	Arylsulfatase A
<b>Preservatives</b>	Supplied at 0.5 mg/ml in Tris saline, 0.02% sodium azide, pH 7.3 with 0.5% bovine serum albumin. Aliquot and store at -20°C. Minimize freezing and thawing.
<b>Storage</b>	Aliquot and store at -20°C. Minimize freezing and thawing.
<b>Note</b>	For research use only
<b>Application notes</b>	ELISA: Peptide ELISA: antibody detection limit dilution 1:32000.WB: Approx 55kDa band observed in Mouse Testis lysates (calculated MW of 53.6kDa according to human NP_000478.2 and 53.7kDa according to Mouse NP_033843.2). Recommended concentration: 0.5-1.5 µg/ml.
<b>Protein Sequence</b>	YDLSKDPGENYN
<b>Clonality</b>	Polyclonal
<b>MW</b>	53.6; 44.9
<b>Entrez</b>	<b>410</b>
<b>Dilution Range</b>	ELISA: 1:32000, WB: 0.3-1 µg/ml, IHC-P: 5 µg/ml
<b>Expiration Date</b>	12 months from date of receipt.



Western blot analysis of Mouse Testis ly...



Immunohistochemical staining of Human Co...



Immunohistochemical staining of Human Te...