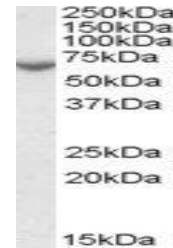


## Product Datasheet

### STS antibody (orb19638)

<b>Description</b>	Goat polyclonal antibody to STS
<b>Species/Host</b>	Goat
<b>Reactivity</b>	Human
<b>Conjugation</b>	Unconjugated
<b>Tested Applications</b>	ELISA, WB
<b>Target</b>	Arylsulfatase C / STS
<b>Preservatives</b>	Supplied at 0.5 mg/ml in Tris saline, 0.02% sodium azide, pH 7.3 with 0.5% bovine serum albumin. Aliquot and store at -20°C. Minimize freezing and thawing.
<b>Storage</b>	Aliquot and store at -20°C. Minimize freezing and thawing.
<b>Note</b>	For research use only
<b>Application notes</b>	ELISA: Peptide ELISA: antibody detection limit dilution 1:32000.WB: Approx 70kDa band observed in Human Placenta lysates (calculated MW of 65.5kDa according to NP_000342.2). Recommended concentration: 0.01-0.03 µg/ml.
<b>Protein Sequence</b>	QAGQKIDEPTSN
<b>Clonality</b>	Polyclonal
<b>MW</b>	65.5
<b>Entrez</b>	<a href="#">412</a>
<b>Dilution Range</b>	ELISA: 1:32000, WB: 0.01-0.03 µg/ml
<b>Expiration Date</b>	12 months from date of receipt.



orb19638  
(0.01ug/ml)  
staining of  
Human P...