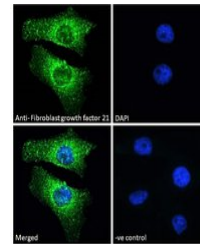


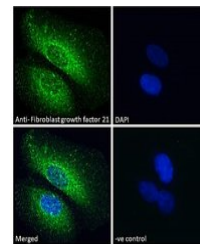
Product Datasheet

Fibroblast growth factor 21 antibody (orb19637)

Description	Goat polyclonal to Fibroblast growth factor 21
Species/Host	Goat
Reactivity	Human
Conjugation	Unconjugated
Tested Applications	ELISA, IF
Target	Fibroblast growth factor 21
Preservatives	Supplied at 0.5 mg/ml in Tris saline, 0.02% sodium azide, pH 7.3 with 0.5% bovine serum albumin. Aliquot and store at -20°C. Minimize freezing and thawing.
Storage	Aliquot and store at -20°C. Minimize freezing and thawing.
Note	For research use only
Application notes	ELISA: Peptide ELISA: antibody detection limit dilution 1:2000.WB: Approx 22kDa band observed in Human Liver lysates (calculated MW of 22.3kDa according to NP_061986.1). Recommended concentration: 1-3 µg/ml.
Protein Sequence	CQRPDGALYGSLH
Clonality	Polyclonal
MW	22.3
Entrez	26291
Dilution Range	ELISA: 1:6000, IF/ICC: 10µg/ml
Expiration Date	12 months from date of receipt.



Immunofluorescence analysis of HeLa cell...



Immunofluorescence analysis of U2OS cell...