

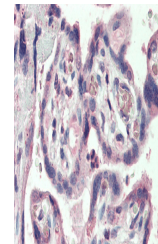
Product Datasheet

SLC12A4 antibody (orb19634)

Description	Goat polyclonal antibody to SLC12A4
Species/Host	Goat
Reactivity	Canine, Human, Mouse, Rat
Conjugation	Unconjugated
Tested Applications	ELISA, IHC, WB
Target	KCC1 / SLC12A4
Preservatives	Supplied at 0.5 mg/ml in Tris saline, 0.02% sodium azide, pH 7.3 with 0.5% bovine serum albumin. Aliquot and store at -20°C. Minimize freezing and thawing.
Storage	Aliquot and store at -20°C. Minimize freezing and thawing.
Note	For research use only
Application notes	ELISA: Peptide ELISA: antibody detection limit dilution 1:4000.WB: Approx 150kDa band observed in Human Heart and Skeletal Muscle lysates (calculated MW of 121kDa according to NP_005063.1). Recommended concentration: 0.3-1 µg/ml.
Protein Sequence	DPSHAPDNFRE
Clonality	Polyclonal
MW	121
Entrez	6560
Dilution Range	ELISA: 1:4000, WB: 0.3-1 µg/ml, IHC-P: 5 µg/ml
Expiration Date	12 months from date of receipt.



orb19634
(0.3ug/ml)
staining of
Human He...



orb19634
(5µg/ml)
staining of
paraffin ...