

---

## Product Datasheet

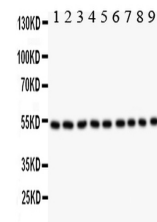
### Desmin Antibody (orb196275)

<b>Description</b>	Desmin Antibody
<b>Species/Host</b>	Rabbit
<b>Reactivity</b>	Human, Mouse, Rat
<b>Conjugation</b>	Unconjugated
<b>Tested Applications</b>	IF, IHC, WB
<b>Immunogen</b>	E.coli-derived human Desmin recombinant protein (Position: M1-T304). Human Desmin shares 97% amino acid (aa) sequence identity with both mouse and rat Desmin.
<b>Form/Appearance</b>	Lyophilized
<b>Concentration</b>	Adding 0.2 ml of distilled water will yield a concentration of 500 µg/ml.
<b>Storage</b>	Store at -20°C for one year from date of receipt. After reconstitution, at 4°C for one month. It can also be aliquotted and stored frozen at -20°C for six months. Avoid repeated freeze-thaw cycles.
<b>Note</b>	For research use only
<b>Application notes</b>	WB: The detection limit for Desmin is approximately 0.25ng/lane under reducing conditions. Tested Species: In-house tested species with positive results. By Heat: Boiling the paraffin sections in 10mM citrate buffer, pH6.0, for 20mins is required for the staining of formalin/paraffin sections. Other applications have not been tested. Optimal dilutions should be determined by end users. . Add 0.2ml of distilled water will yield a concentration of 500ug/ml.
<b>Isotype</b>	Rabbit IgG
<b>Clonality</b>	Polyclonal
<b>MW</b>	53536 MW
<b>Uniprot ID</b>	<b>P17661</b>
<b>Dilution Range</b>	Immunohistochemistry (Frozen Section), 0.5-1µg/ml, Mouse, Rat, -Immunohistochemistry (Paraffin-embedded Section), 0.5-1µg/ml, Human, Mouse, Rat, By HeatWestern blot, 0.1-0.5µg/ml, Human, Mouse, Rat
<b>Expiration Date</b>	12 months from date of receipt.

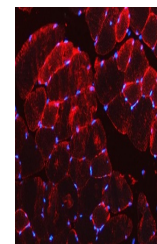
97KD —

40KD —  
29KD —  
20KD —  
14KD —

WB analysis of Desmin using anti-Desmin ...



WB analysis of Desmin using anti-Desmin ...



IF analysis of Desmin using anti-Desmin ...