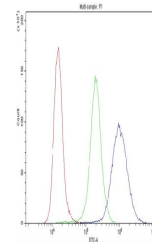


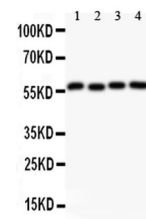
Product Datasheet

Cyclin B1/CCNB1 Antibody (orb196274)

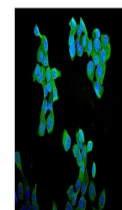
Description	Cyclin B1/CCNB1 Antibody
Species/Host	Rabbit
Reactivity	Human
Conjugation	Unconjugated
Tested Applications	FC, ICC, IF, WB
Immunogen	E.coli-derived human Cyclin B1 recombinant protein (Position: M1-V433). Human Cyclin B1 shares 86% and 85% amino acid (aa) sequences identity with mouse and rat Cyclin B1, respectively.
Form/Appearance	Lyophilized
Concentration	Adding 0.2 ml of distilled water will yield a concentration of 500 µg/ml.
Storage	Store at -20°C for one year from date of receipt. After reconstitution, at 4°C for one month. It can also be aliquotted and stored frozen at -20°C for six months. Avoid repeated freeze-thaw cycles.
Note	For research use only
Application notes	WB: The detection limit for Cyclin B1 is approximately 0.25ng/lane under reducing conditions. Tested Species: In-house tested species with positive results. Other applications have not been tested. Optimal dilutions should be determined by end users. . Add 0.2ml of distilled water will yield a concentration of 500ug/ml.
Isotype	Rabbit IgG
Clonality	Polyclonal
MW	48337 MW
Uniprot ID	P14635
Expiration Date	12 months from date of receipt.



Flow Cytometry analysis of THP-1 cells u...



WB analysis of CCNB1 using anti-CCNB1 an...



IF analysis of CCNB1 using anti-CCNB1 an...