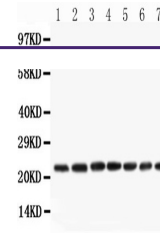
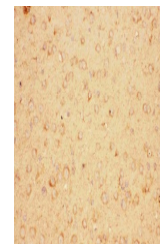

Product Datasheet

CNTF Antibody (orb196238)

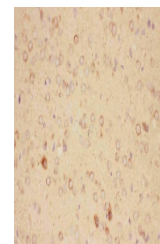
Description	CNTF Antibody
Species/Host	Rabbit
Reactivity	Mouse, Rat
Conjugation	Unconjugated
Tested Applications	ELISA, IHC, WB
Immunogen	E. coli-derived rat CNTF recombinant protein (Position: A2-M200). Rat CNTF shares 84% and 95% amino acid (aa) sequences identity with human and mouse CNTF, respectively.
Form/Appearance	Lyophilized
Concentration	Adding 0.2 ml of distilled water will yield a concentration of 500 µg/ml.
Storage	Store at -20°C for one year from date of receipt. After reconstitution, at 4°C for one month. It can also be aliquotted and stored frozen at -20°C for six months. Avoid repeated freeze-thaw cycles.
Note	For research use only
Application notes	WB: The detection limit for CNTF is approximately 0.25ng/lane under reducing conditions. Tested Species: In-house tested species with positive results. By Heat: Boiling the paraffin sections in 10mM citrate buffer, pH6.0, for 20mins is required for the staining of formalin/paraffin sections. Other applications have not been tested. Optimal dilutions should be determined by end users. . Add 0.2ml of distilled water will yield a concentration of 500ug/ml.
Isotype	Rabbit IgG
Clonality	Polyclonal
MW	22854 MW
Uniprot ID	P20294
Sensitivity	5pg/ml
Expiration Date	12 months from date of receipt.



WB analysis of CNTF using anti-CNTF anti...



IHC analysis of CNTF using anti-CNTF ant...



IHC analysis of CNTF using anti-CNTF ant...