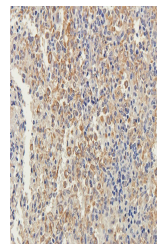


Product Datasheet

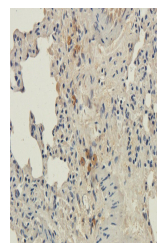
EPAS1 antibody (orb19610)

Description	EPAS1 antibody
Species/Host	Rabbit
Reactivity	Guinea pig, Human, Mouse, Rat
Conjugation	Unconjugated
Tested Applications	ICC, IF, IHC-P, WB
Immunogen	KLH conjugated synthetic peptide derived from human EPAS1. Please contact us for the exact immunogen sequence. The peptide is available as orb393978.
Target	EPAS1
Form/Appearance	10 mM PBS, 0.02% sodium azide
Concentration	- 100 µg (in 200 µl): 0.5 mg/ml- 200 µg (in 400 µl): 0.5 mg/ml
Storage	Store at 4°C for up to two weeks. For long term storage, aliquot and store at -20°C, avoid freeze/thaw cycles.
Note	For research use only
Isotype	IgG
Clonality	Polyclonal
Purity	Polyclonal antibodies are purified by peptide affinity chromatography
MW	96 kDa
Uniprot ID	P10683
NCBI	015973, 057057
Entrez	51083
Dilution Range	IF/ICC: 1:100-500, IHC-P: 1:100-600, WB: 1:200-1000
Expiration Date	12 months from date of receipt.

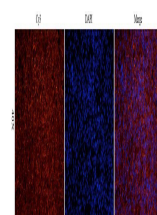


IHC-P image of guinea pig spleen tissue

...



IHC-P image of rat lung tissue using EPA...



IF analysis of guinea pig spleen tissue

...