

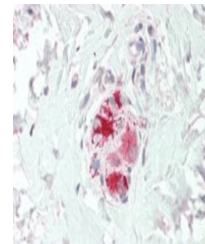
Product Datasheet

Neurturin antibody (orb19603)

Description	Goat polyclonal to Neurturin
Species/Host	Goat
Reactivity	Human
Conjugation	Unconjugated
Tested Applications	ELISA, IHC, WB
Target	Neurturin
Preservatives	Supplied at 0.5 mg/ml in Tris saline, 0.02% sodium azide, pH 7.3 with 0.5% bovine serum albumin. Aliquot and store at -20°C. Minimize freezing and thawing.
Storage	Aliquot and store at -20°C. Minimize freezing and thawing.
Note	For research use only
Application notes	ELISA: Peptide ELISA: antibody detection limit dilution 1:64000.WB: Approx 25kDa band observed in Human Heart and Mouse Heart lysates (calculated MW of 22.4kDa according to NP_004549.1). Recommended concentration: 0.1-0.3 µg/ml.
Protein Sequence	DAHSRYHTVHELARE
Clonality	Polyclonal
MW	22.4
Entrez	4902
Dilution Range	ELISA: 1:64000, WB: 0.1-0.3 µg/ml, IHC-P: 5 µg/ml
Expiration Date	12 months from date of receipt.



orb19603 (0.1ug/ml)
staining of Human
He...



Immunohistochemical
staining of Human
Co...