

---

## Product Datasheet

### VTCN1 antibody (orb19600)

**Description**

Goat polyclonal antibody to VTCN1

**Species/Host**

Goat

**Reactivity**

Canine, Human, Mouse, Rat

**Conjugation**

Unconjugated

**Tested Applications**

ELISA, FC, IF, WB

**Target**

B7-H4

**Preservatives**

Supplied at 0.5 mg/ml in Tris saline, 0.02% sodium azide, pH 7.3 with 0.5% bovine serum albumin. Aliquot and store at -20°C. Minimize freezing and thawing.

**Storage**

Aliquot and store at -20°C. Minimize freezing and thawing.

**Note**

For research use only

**Application notes**

ELISA: Peptide ELISA: antibody detection limit dilution 1:64000. WB: Approx. 60kDa band observed in Human Lung, Spleen and Thymus lysates (calculated MW of 30.9kDa according to NP\_078902.2). The observed molecular weight corresponds to earlier findings in literature with different antibodies (Simon et al, Cancer Res. 2006 Feb 1;66(3):1570-5.; PMID: 16452214). In transfected HEK293 transiently expressing B7-H4 the band of approx. 60kDa is also observed. This band is not observed in the non-transfected HEK293. Recommended concentration: 0.3-1 µg/ml.

**Protein Sequence**

SKGKGNANLEYK

**Clonality**

Polyclonal

**MW**

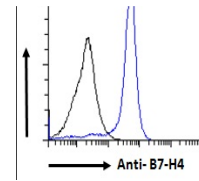
30.9; 20.7

**Entrez**
[79679](#)
**Dilution Range**

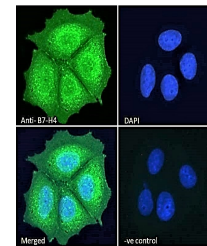
ELISA: 1:64000, WB: 0.1-1 µg/ml, IHC-P: 10ug/ml

**Expiration Date**

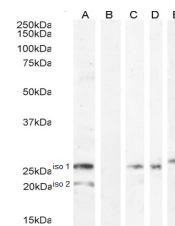
12 months from date of receipt.



Flow cytometric analysis of paraformalde...



Immunofluorescence analysis of paraforma...



Western blot analysis of HEK293 iso 1 + ...