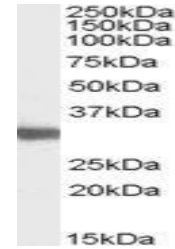


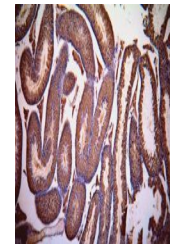
Product Datasheet

LDHC antibody (orb19590)

Description	Goat polyclonal to LDHC
Species/Host	Goat
Reactivity	Human, Mouse
Conjugation	Unconjugated
Tested Applications	ELISA, IHC, WB
Target	LDHC (aa 217 - 231)
Preservatives	Supplied at 0.5 mg/ml in Tris saline, 0.02% sodium azide, pH 7.3 with 0.5% bovine serum albumin. Aliquot and store at -20°C. Minimize freezing and thawing.
Storage	Aliquot and store at -20°C. Minimize freezing and thawing.
Note	For research use only
Application notes	Both variants represent identical product (NP_002292.1 and NP_059144.1).ELISA: Peptide ELISA: antibody detection limit dilution 1:16000.IHC: Strong signal in seminiferous tubules of Mouse Testis.WB: Approx 30-35kDa band observed in Mouse Testis lysates (calculated MW of 36.6kDa according to human NP_002292.1 and 35.9kDa according to mouse NP_038608.1). Recommended concentration: 0.03-0.1 µg/ml.
Protein Sequence	KLGTDSKKEHWKNIH
Clonality	Polyclonal
MW	36.3
Entrez	3948
Dilution Range	ELISA: 1:16000, WB: 0.03-0.1 µg/ml
Expiration Date	12 months from date of receipt.



orb19590
(0.03ug/ml)
staining of
Mouse T...



orb19590
(1ug/ml)
staining of
paraffin e...