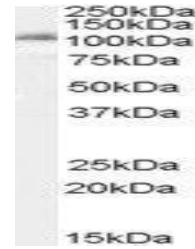


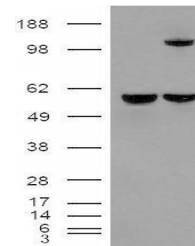
## Product Datasheet

### IDE antibody (orb19588)

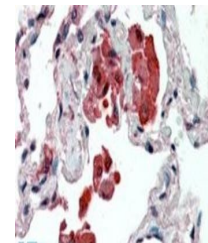
|                            |  |
|----------------------------|--|
| <b>Description</b>         | Goat polyclonal antibody to IDE  |
| <b>Species/Host</b>        | Goat   |
| <b>Reactivity</b>          | Canine, Human  |
| <b>Conjugation</b>         | Unconjugated   |
| <b>Tested Applications</b> | ELISA, IHC, WB   |
| <b>Target</b>              | Insulysin / Insulinase   |
| <b>Preservatives</b>       | Supplied at 0.5 mg/ml in Tris saline, 0.02% sodium azide, pH 7.3 with 0.5% bovine serum albumin. Aliquot and store at -20°C. Minimize freezing and thawing.  |
| <b>Storage</b>             | Aliquot and store at -20°C. Minimize freezing and thawing.   |
| <b>Note</b>                | For research use only  |
| <b>Application notes</b>   | ELISA: Peptide ELISA: antibody detection limit dilution 1:32000.WB: Approx 110-120kDa band observed in lysates of cell line K562 (calculated MW of 118kDa according to NP_004960.1). In transfected HEK293 transiently expressing Insulysin a band of approx. 110kDa is observed. This band is not observed in the non-transfected HEK293. Recommended concentration: 0.1-0.3 µg/ml. |
| <b>Protein Sequence</b>    | QQYNFDRDNT   |
| <b>Clonality</b>           | Polyclonal   |
| <b>MW</b>                  | 118, 54  |
| <b>Entrez</b>              | <b>3416</b>  |
| <b>Dilution Range</b>      | ELISA: 1:32000, WB: 0.1-0.3 µg/ml, IHC-P: 2.5 µg/ml  |
| <b>Expiration Date</b>     | 12 months from date of receipt.  |



Western blot analysis of K562 cell lysat...



Western blot analysis of HEK293 lysate u...



Immunohistochemical staining of Human Lu...