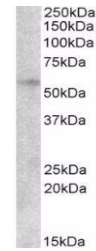


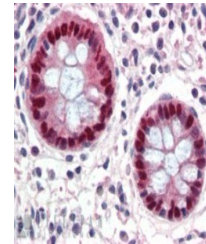
## Product Datasheet

### EGR2 antibody (orb19587)

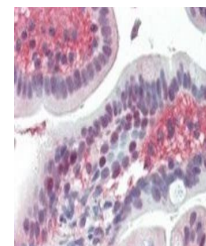
<b>Description</b>	Goat polyclonal antibody to EGR2
<b>Species/Host</b>	Goat
<b>Reactivity</b>	Canine, Human, Mouse, Rat
<b>Conjugation</b>	Unconjugated
<b>Tested Applications</b>	ELISA, WB
<b>Target</b>	EGR2
<b>Preservatives</b>	Supplied at 0.5 mg/ml in Tris saline, 0.02% sodium azide, pH 7.3 with 0.5% bovine serum albumin. Aliquot and store at -20°C. Minimize freezing and thawing.
<b>Storage</b>	Aliquot and store at -20°C. Minimize freezing and thawing.
<b>Note</b>	For research use only
<b>Application notes</b>	ELISA: Peptide ELISA: antibody detection limit dilution 1:64000.IHC: In paraffin embedded Human Colon shows nuclear staining of absorptive cells. Recommended concentration, 3-5ug/ml.WB: Approx 55kDa band observed in lysates of cell line HepG2 (calculated MW of 50.3kDa according to NP_000390.2). Recommended concentration: 0.03-0.1 µg/ml.
<b>Protein Sequence</b>	HGTAGPDRKPFPC
<b>Clonality</b>	Polyclonal
<b>MW</b>	50.3
<b>Entrez</b>	<b>1959</b>
<b>Dilution Range</b>	ELISA: 1:8000, WB: 2-6 µg/ml
<b>Expiration Date</b>	12 months from date of receipt.



Western blot analysis of HepG2 lysate us...



Immunohistochemical staining of Human Co...



Immunohistochemical staining of Human Sm...