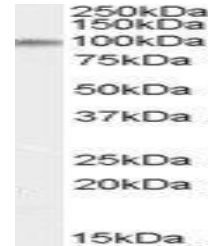


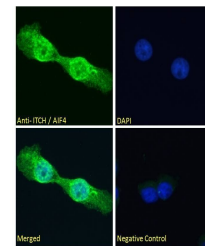
## Product Datasheet

### ITCH antibody (orb19579)

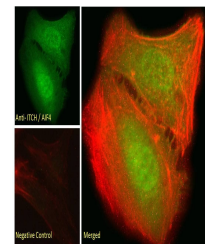
<b>Description</b>	Goat polyclonal antibody to ITCH
<b>Species/Host</b>	Goat
<b>Reactivity</b>	Bovine, Canine, Human, Mouse, Rat
<b>Conjugation</b>	Unconjugated
<b>Tested Applications</b>	ELISA, FC, IF, WB
<b>Target</b>	ITCH / AIF4
<b>Preservatives</b>	Supplied at 0.5 mg/ml in Tris saline, 0.02% sodium azide, pH 7.3 with 0.5% bovine serum albumin. Aliquot and store at -20°C. Minimize freezing and thawing.
<b>Storage</b>	Aliquot and store at -20°C. Minimize freezing and thawing.
<b>Note</b>	For research use only
<b>Application notes</b>	ELISA: Peptide ELISA: antibody detection limit dilution 1:32000.WB: Approx 100kDa band observed in Human Brain (Frontal Cortex) lysates (calculated MW of 98.7kDa according to NP_113671.3). Recommended concentration: 0.03-0.1 µg/ml.
<b>Protein Sequence</b>	EIKSHDLKPNGGN
<b>Clonality</b>	Polyclonal
<b>MW</b>	98.7, 102.7; 86.4
<b>Entrez</b>	<a href="#">83737</a>
<b>Dilution Range</b>	ELISA: 1:16000, WB: 0.1-0.3 µg/ml, IHC-P: 10ug/ml
<b>Expiration Date</b>	12 months from date of receipt.



orb19579  
(0.03ug/ml) staining  
of Human B...



Immunofluorescence  
analysis of A431  
cell...



Immunofluorescence  
analysis of U2OS  
cell...