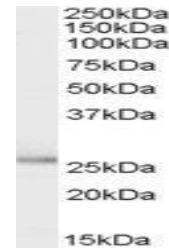


Product Datasheet

TPD52L1 antibody (orb19573)

Description	Goat polyclonal antibody to TPD52L1
Species/Host	Goat
Reactivity	Human
Conjugation	Unconjugated
Tested Applications	ELISA, WB
Target	TPD52L1 / D53
Preservatives	Supplied at 0.5 mg/ml in Tris saline, 0.02% sodium azide, pH 7.3 with 0.5% bovine serum albumin. Aliquot and store at -20°C. Minimize freezing and thawing.
Storage	Aliquot and store at -20°C. Minimize freezing and thawing.
Note	For research use only
Application notes	ELISA: Peptide ELISA: antibody detection limit dilution 1:8000.WB: Approx 26kDa band observed in Human Breast cancer lysates (calculated MW of 22.5kDa according to NP_003278.1). Recommended concentration: 0.1-0.3 µg/ml. See also our D52 and D54 products.
Protein Sequence	EPLQGTDEDASAD
Clonality	Polyclonal
MW	22.5; 16.2; 14.7
Entrez	7164
Dilution Range	ELISA: 1:8000, WB: 0.1-0.3 µg/ml
Expiration Date	12 months from date of receipt.



orb19573
(0.1µg/ml)
staining of
Human Br...