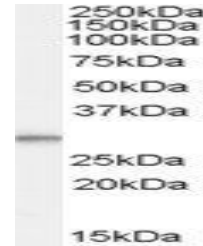


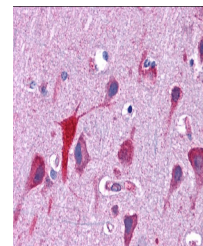
## Product Datasheet

### TPD52L2 antibody (orb19569)

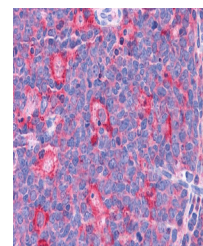
<b>Description</b>	Goat polyclonal antibody to TPD52L2
<b>Species/Host</b>	Goat
<b>Reactivity</b>	Human
<b>Conjugation</b>	Unconjugated
<b>Tested Applications</b>	ELISA, IHC, WB
<b>Target</b>	TPD52L2 / D54
<b>Preservatives</b>	Supplied at 0.5 mg/ml in Tris saline, 0.02% sodium azide, pH 7.3 with 0.5% bovine serum albumin. Aliquot and store at -20°C. Minimize freezing and thawing.
<b>Storage</b>	Aliquot and store at -20°C. Minimize freezing and thawing.
<b>Note</b>	For research use only
<b>Application notes</b>	ELISA: Peptide ELISA: antibody detection limit dilution 1:16000.WB: Approx 28kDa band observed in Human Breast Cancer and Human Brain lysates (calculated MW of 24.9kDa according to NP_955392.1). Recommended concentration: 0.1-0.3 µg/ml. See also our D52 and D53 products.
<b>Protein Sequence</b>	SGDKPLSDPAP
<b>Clonality</b>	Polyclonal
<b>MW</b>	24.9; 22.5; 23.8; 21.4; 22.2; 19.9
<b>Entrez</b>	<b>7165</b>
<b>Dilution Range</b>	ELISA: 1:16000, WB: 0.1-0.3 µg/ml, IHC-P: 3.75 µg/ml
<b>Expiration Date</b>	12 months from date of receipt.



orb19569 (0.1µg/ml)  
staining of Human  
Br...



Immunohistochemical  
staining of Human  
Co...



Immunohistochemical  
staining of Human  
To...