

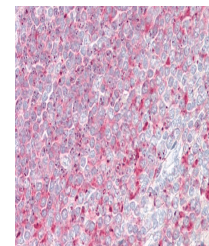
Product Datasheet

TPD52 antibody (orb19568)

Description	Goat polyclonal antibody to TPD52
Species/Host	Goat
Reactivity	Human
Conjugation	Unconjugated
Tested Applications	ELISA, IHC, WB
Target	TPD52
Preservatives	Supplied at 0.5 mg/ml in Tris saline, 0.02% sodium azide, pH 7.3 with 0.5% bovine serum albumin. Aliquot and store at -20°C. Minimize freezing and thawing.
Storage	Aliquot and store at -20°C. Minimize freezing and thawing.
Note	For research use only
Application notes	ELISA: Peptide ELISA: antibody detection limit dilution 1:8000.WB: Approx 26-28kDa band observed in Human Lymph Node and Human Kidney lysates (calculated MW of 24.3kDa according to NP_001020423.1). The observed molecular weight corresponds to earlier findings in literature with different antibodies (Tiacci et al , Blood. 2005 Apr 1;105(7):2812-20.; PMID: 15576473). Recommended concentration: 1-3 µg/ml.
Protein Sequence	TEPLPEKTQES
Clonality	Polyclonal
MW	24.3; 22.5; 19.9
Entrez	7163
Dilution Range	ELISA: 1:8000, WB: 1-3 µg/ml, IHC-P: 3.75 µg/ml
Expiration Date	12 months from date of receipt.



orb19568 (1µg/ml) staining of Human Lymph...



Immunohistochemical staining of Human Sp...