
Product Datasheet

RAB5A antibody (orb19552)

Description

RAB5A antibody

Species/Host

Rabbit

Reactivity

Guinea pig, Human, Mouse, Rat

Conjugation

Unconjugated

Tested Applications

ICC, IF, IHC-P, WB

Immunogen

KLH conjugated synthetic peptide derived from human RAB5A. Please contact us for the exact immunogen sequence. The peptide is available as orb393975.

Target

RAB5A

Form/Appearance

10 mM PBS, 0.02% sodium azide

Concentration

- 100 µg (in 200 µl): 0.5 mg/ml- 200 µg (in 400 µl): 0.5 mg/ml

Storage

Store at 4°C for up to two weeks. For long term storage, aliquot and store at -20°C, avoid freeze/thaw cycles.

Note

For research use only

Isotype

IgG

Clonality

Polyclonal

Purity

Polyclonal antibodies are purified by peptide affinity chromatography

MW

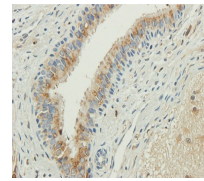
24 kDa

Uniprot ID
[P10683](#)
NCBI
[015973](#), [057057](#)
Entrez
[51083](#)
Dilution Range

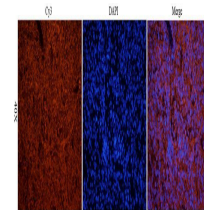
IF/ICC: 1:100-500, IHC-P: 1:100-500, WB: 1:200-2000

Expiration Date

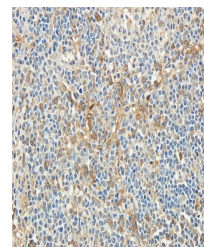
12 months from date of receipt.



Immunohistochemical staining of paraffin...



IF analysis of guinea pig spleen tissue ...



IHC-P staining of guinea pig spleen tiss...