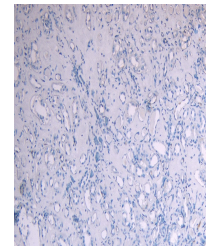


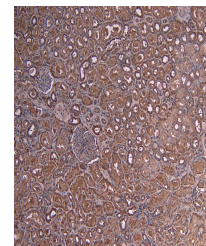
## Product Datasheet

### MYB antibody (orb19550)

<b>Description</b>	Goat polyclonal antibody to MYB
<b>Species/Host</b>	Goat
<b>Reactivity</b>	Canine, Human, Mouse, Rat
<b>Conjugation</b>	Unconjugated
<b>Tested Applications</b>	ELISA, IHC, WB
<b>Target</b>	c-Myb (aa281-294)
<b>Preservatives</b>	Supplied at 0.5 mg/ml in Tris saline, 0.02% sodium azide, pH 7.3 with 0.5% bovine serum albumin. Aliquot and store at -20°C. Minimize freezing and thawing.
<b>Storage</b>	Aliquot and store at -20°C. Minimize freezing and thawing.
<b>Note</b>	For research use only
<b>Application notes</b>	ELISA: Peptide ELISA: antibody detection limit dilution 1:8000.IHC: In paraffin embedded Human Kidney shows cytoplasm staining of renal tubules and in Human Breast cytoplasm staining of ductal epithelial cells. Recommended concentration, 3-6ug/ml.WB: Approx 75kDa band observed in Human Spleen lysates (calculated MW of 72.3kDa according to NP_005366.2). Recommended concentration: 0.3-1 µg/ml.
<b>Protein Sequence</b>	QRHYNDEDPEKEKR
<b>Clonality</b>	Polyclonal
<b>MW</b>	72.3
<b>Entrez</b>	<b>4602</b>
<b>Dilution Range</b>	ELISA: 1:4000, WB: 1-3 µg/ml, IHC-P: 4 µg/ml
<b>Expiration Date</b>	12 months from date of receipt.



Immunohistochemical staining of Human Ki...



Immunohistochemical staining of Human Ki...



Western blot analysis of MOLT4 cell lysa...