

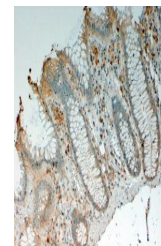
## Product Datasheet

### IL12 p40 antibody (orb19546)

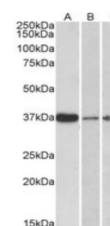
<b>Description</b>	Goat polyclonal antibody to IL12 p40
<b>Species/Host</b>	Goat
<b>Reactivity</b>	Human
<b>Conjugation</b>	Unconjugated
<b>Tested Applications</b>	ELISA, WB
<b>Target</b>	IL12B / IL12p40
<b>Preservatives</b>	Supplied at 0.5 mg/ml in Tris saline, 0.02% sodium azide, pH 7.3 with 0.5% bovine serum albumin. Aliquot and store at -20°C. Minimize freezing and thawing.
<b>Storage</b>	Aliquot and store at -20°C. Minimize freezing and thawing.
<b>Note</b>	For research use only
<b>Application notes</b>	ELISA: Peptide ELISA: antibody detection limit dilution 1:16000.IHC: In paraffin embedded Human Colon shows cytoplasm staining of individual cells between columns. In paraffin embedded Human Kidney shows cytoplasm staining of epithelial cells of some DCT. Recommended concentration, 4-6ug/ml.WB: Approx 37kDa band observed in Human Liver lysates (calculated MW of 37.2kDa according to NP_002178.2). Recommended concentration: 0.1-0.3 µg/ml.
<b>Protein Sequence</b>	QGKSKREKKDRVFTD
<b>Clonality</b>	Polyclonal
<b>MW</b>	37.2
<b>Entrez</b>	<b>3593</b>
<b>Dilution Range</b>	ELISA: 1:128000, WB: 0.3-1 µg/ml
<b>Expiration Date</b>	12 months from date of receipt.



orb19546 (0.1ug/ml) staining of Human Li...



orb19546 (4ug/ml) staining of paraffin e...



Western blot analysis of Mouse Liver (la...