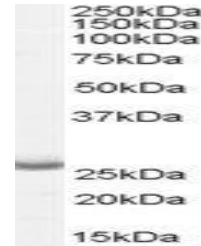


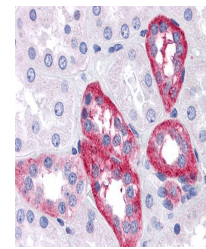
## Product Datasheet

### APH1A antibody (orb19545)

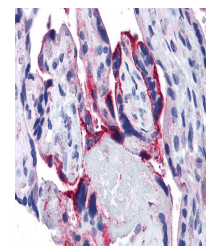
<b>Description</b>	Goat polyclonal antibody to APH1A
<b>Species/Host</b>	Goat
<b>Reactivity</b>	Bovine, Canine, Human, Mouse, Porcine, Rat
<b>Conjugation</b>	Unconjugated
<b>Tested Applications</b>	ELISA, IHC, WB
<b>Target</b>	APH1A
<b>Preservatives</b>	Supplied at 0.5 mg/ml in Tris saline, 0.02% sodium azide, pH 7.3 with 0.5% bovine serum albumin. Aliquot and store at -20°C. Minimize freezing and thawing.
<b>Storage</b>	Aliquot and store at -20°C. Minimize freezing and thawing.
<b>Note</b>	For research use only
<b>Application notes</b>	ELISA: Peptide ELISA: antibody detection limit dilution 1:128000.WB: Approx 26kDa band observed in Human Brain (Cerebral Cortex) lysates (calculated MW of 26.8kDa according to NP_057106.2). Recommended concentration: 0.05-0.1 µg/ml.
<b>Protein Sequence</b>	HVTDRSDARLQYG
<b>Clonality</b>	Polyclonal
<b>MW</b>	28.9, 26.8
<b>Entrez</b>	<b>51107</b>
<b>Dilution Range</b>	ELISA: 1:128000, WB: 0.05-0.1 µg/ml, IHC-P: 5 µg/ml
<b>Expiration Date</b>	12 months from date of receipt.



orb19545 (0.05ug/ml)  
staining of Human  
B...



Immunohistochemical  
staining of Human  
Ki...



Immunohistochemical  
staining of Human  
Pl...