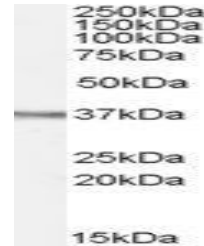


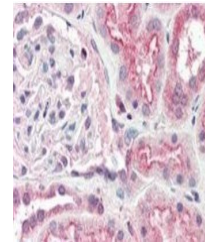
## Product Datasheet

### Ogg1 antibody (orb19538)

<b>Description</b>	Goat polyclonal to Ogg1
<b>Species/Host</b>	Goat
<b>Reactivity</b>	Mouse, Rat
<b>Conjugation</b>	Unconjugated
<b>Tested Applications</b>	ELISA, IHC, WB
<b>Target</b>	Ogg1 (mouse)
<b>Preservatives</b>	Supplied at 0.5 mg/ml in Tris saline, 0.02% sodium azide, pH 7.3 with 0.5% bovine serum albumin. Aliquot and store at -20°C. Minimize freezing and thawing.
<b>Storage</b>	Aliquot and store at -20°C. Minimize freezing and thawing.
<b>Note</b>	For research use only
<b>Application notes</b>	ELISA: Peptide ELISA: antibody detection limit dilution 1:128000.WB: Approx 37kDa band observed in Rat Spleen lysates (calculated MW of 38.7kDa according to Rat NP_110497.1 and 38.8kDa according to Mouse NP_035087.2). Recommended concentration: 0.1-0.3 µg/ml.
<b>Protein Sequence</b>	HPKTSQAKGPSPLANK
<b>Clonality</b>	Polyclonal
<b>MW</b>	38.8, 38.8, 45.8, 47.2, 39.7, 22.2, 40.1, 36.1
<b>Dilution Range</b>	ELISA: 1:128000, WB: 0.1-0.3 µg/ml, IHC-P: 5 µg/ml
<b>Expiration Date</b>	12 months from date of receipt.



Western blot analysis of Rat Spleen lysa...



Immunohistochemical staining of Human Ki...