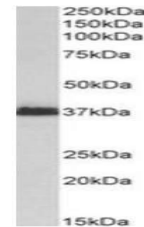


Product Datasheet

MSI2 antibody (orb195346)

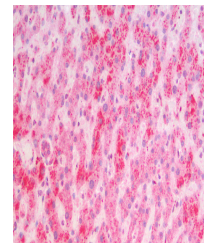
Description	Goat polyclonal antibody to MSI2
Species/Host	Goat
Reactivity	Canine, Human, Mouse
Conjugation	Unconjugated
Tested Applications	ELISA, IHC, WB
Target	MSI2 / musashi-2
Preservatives	Supplied at 0.5 mg/ml in Tris saline, 0.02% sodium azide, pH 7.3 with 0.5% bovine serum albumin. Aliquot and store at -20°C. Minimize freezing and thawing.
Storage	Aliquot and store at -20°C. Minimize freezing and thawing.
Note	For research use only
Application notes	This antibody is expected to recognize isoform a (NP_620412.1) only.ELISA: antibody detection limit dilution 1:128000.WB: Approx 37kDa band observed in lysates of cell line Kelly (calculated MW of 35.2kDa according to NP_620412.1). Approx 35+37kDa bands observed in fetal Mouse Brain lysates (calculated MW of 36.9kDa according to NP_473384.1). Recommended concentration: 1-3µg/ml.
Protein Sequence	QGTSGSANDSQHD
Clonality	Polyclonal
MW	35.2; 28.4
Entrez	124540
Dilution Range	ELISA: 1:128000, WB: 1-3 µg/ml, IHC-P: 5 µg/ml
Expiration Date	12 months from date of receipt.



Western blot analysis of Kelly lysate us...



Western blot analysis of Mouse Brain lys...



Immunohistochemical staining of Human Li...