

---

## Product Datasheet

### MSI2 antibody (orb195345)

**Description**

Goat polyclonal antibody to MSI2

**Species/Host**

Goat

**Reactivity**

Bovine, Human, Mouse

**Conjugation**

Unconjugated

**Tested**

ELISA, IHC, WB

**Applications**
**Target**

MSI2 / musashi-2 (aa33-43)

**Preservatives**

Supplied at 0.5 mg/ml in Tris saline, 0.02% sodium azide, pH 7.3 with 0.5% bovine serum albumin. Aliquot and store at -20°C. Minimize freezing and thawing.

**Storage**

Aliquot and store at -20°C. Minimize freezing and thawing.

**Note**

For research use only

**Application notes**

This antibody is expected to recognize both reported isoforms (NP\_620412.1; NP\_733839.1). ELISA: antibody detection limit dilution 1:128000. WB: Approx 37kDa band observed in lysates of cell line Kelly (calculated MW of 35.2kDa according to NP\_620412.1). Recommended concentration: 0.1-0.3µg/ml. Approx 37+39kDa bands observed in fetal Mouse Brain lysates (calculated MW of 36.9kDa according to Mouse NP\_473384.1). The observed molecular weights correspond to earlier findings with different antibodies from other commercial sources. Recommended concentration: 0.3-1µg/ml.

**Protein Sequence**

SPDSLRLDYFSK

**Clonality**

Polyclonal

**MW**

35.2; 28.4

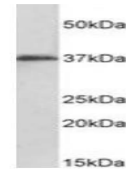
**Entrez**
[124540](#)
**Dilution Range**

ELISA: 1:128000, WB: 0.3-1 µg/ml, IHC-P: 5 µg/ml

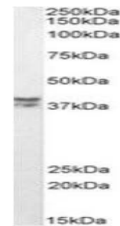
**Expiration Date**

12 months from date of receipt.

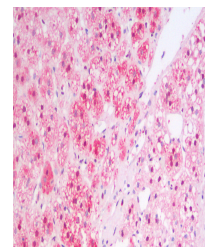

 250kDa  
150kDa  
100kDa


 50kDa  
37kDa  
25kDa  
20kDa  
15kDa

Western blot analysis of Kelly lysate us...


 250kDa  
150kDa  
100kDa  
75kDa  
50kDa  
37kDa  
25kDa  
20kDa  
15kDa

Western blot analysis of Mouse Brain lys...



Immunohistochemical staining of Human Ad...