
Product Datasheet

HMGB1 antibody (orb195321)

Description

HMGB1 antibody

Species/Host

Rabbit

Reactivity

Bovine, Human, Mouse, Rat

Conjugation

Unconjugated

Tested Applications

ELISA, ICC, IF, IHC-P, WB

Applications
Immunogen

KLH conjugated synthetic peptide derived from human HMGB1. Please contact us for the exact immunogen sequence. The peptide is available as orb374832.

Target

HMGB1

Form/Appearance

10 mM PBS, 0.02% sodium azide

Concentration

- 100 µg (in 200 µl): 0.5 mg/ml- 200 µg (in 400 µl): 0.5 mg/ml

Storage

Maintain refrigerated at 2-8°C for up to 2 weeks. For long term storage store at -20°C in small aliquots to prevent freeze-thaw cycles.

Note

For research use only

Isotype

IgG

Clonality

Polyclonal

Purity

Polyclonal antibodies are purified by peptide affinity chromatography

MW

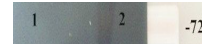
24 kDa

Uniprot ID
[P63159](#), [P63158](#), [P09429](#)
NCBI
[002128](#), [41](#), [002119](#), [11](#)
Entrez
[3146](#)
Dilution Range

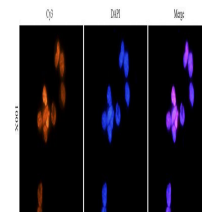
WB: 1:5000, IF/ICC: 1:1000, IHC-P: 1:1000

Expiration Date

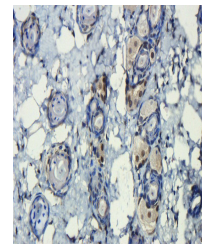
12 months from date of receipt.



WB analysis of rat kidney (Lane 1), brai...



Immunofluorescence analysis of mouse sp2...



IHC-P staining of mouse skin tissue usin...