

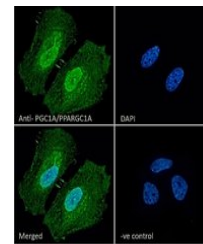
## Product Datasheet

### PPARGC1A antibody (orb19529)

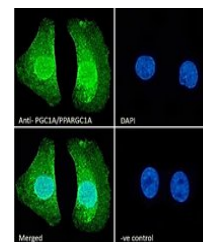
|                            |  |
|----------------------------|--|
| <b>Description</b>         | Goat polyclonal antibody to PPARGC1A   |
| <b>Species/Host</b>        | Goat   |
| <b>Reactivity</b>          | Bovine, Canine, Human, Mouse, Rat  |
| <b>Conjugation</b>         | Unconjugated   |
| <b>Tested Applications</b> | ELISA, FC, IF, IHC   |
| <b>Target</b>              | PGC1A/PPARGC1A   |
| <b>Preservatives</b>       | Supplied at 0.5 mg/ml in Tris saline, 0.02% sodium azide, pH 7.3 with 0.5% bovine serum albumin. Aliquot and store at -20°C. Minimize freezing and thawing.  |
| <b>Storage</b>             | Aliquot and store at -20°C. Minimize freezing and thawing.   |
| <b>Note</b>                | For research use only  |
| <b>Application notes</b>   | ELISA: Peptide ELISA: antibody detection limit dilution 1:64000.WB: Approx 100kDa band observed in Rat Stomach lysates (calculated MW of 91.0kDa according to NP_037393.1. Recommended concentration: 1-3 µg/ml. |
| <b>Protein Sequence</b>    | DGLFDDSEDESDK  |
| <b>Clonality</b>           | Polyclonal   |
| <b>MW</b>                  | 91.0; 91.7; 89.6; 77.1; 91.5   |
| <b>Entrez</b>              | <b>10891</b>   |
| <b>Dilution Range</b>      | ELISA: 1:32000, WB: 0.5-2 µg/ml, IF/ICC: 10µg/ml, FACS: 10ug/ml  |
| <b>Expiration Date</b>     | 12 months from date of receipt.  |



Western blot analysis of Rat Stomach lys...



Immunofluorescence analysis of paraforma...



Immunofluorescence analysis of paraforma...