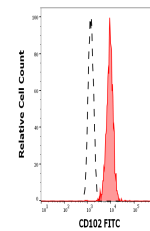


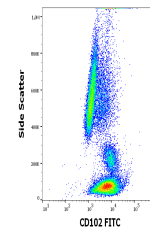
Product Datasheet

CD102 Antibody (FITC) (orb1952605)

Description	CD102 / ICAM-2 (intracellular cell adhesion molecule-2), a counter receptor of LFA-1 (CD11a/CD18), i...
Reactivity	Human
Conjugation	FITC
Tested Applications	FC
Immunogen	Human CD102 cDNA transfected COS cells
Target	CD102
Preservatives	Stabilizing phosphate buffered saline (PBS), pH 7.4, 15 mM sodium azide
Storage	Store at 2-8°C. Protect from prolonged exposure to light. Do not freeze.
Note	For research use only
Application notes	Flow cytometry: The reagent is designed for analysis of human blood cells using 4 µl reagent / 100 µl of whole blood or 106 cells in a suspension. The content of a vial (0.4 ml) is sufficient for 100 tests.
Isotype	Mouse IgG2a
Clonality	Monoclonal
Uniprot ID	P13598
Entrez	3384
Expiration Date	12 months from date of receipt.



Separation of human monocytes (red-fille...



Flow cytometry surface staining pattern ...