

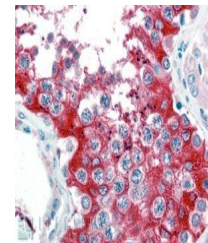
Product Datasheet

G6PD antibody (orb19525)

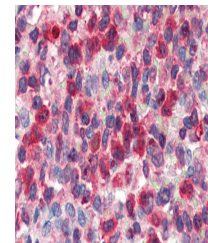
Description	Goat polyclonal antibody to G6PD
Species/Host	Goat
Reactivity	Canine, Human, Mouse, Rat
Conjugation	Unconjugated
Tested Applications	ELISA, IHC, WB
Target	G6PD (aa 308 - 320)
Preservatives	Supplied at 0.5 mg/ml in Tris saline, 0.02% sodium azide, pH 7.3 with 0.5% bovine serum albumin. Aliquot and store at -20°C. Minimize freezing and thawing.
Storage	Aliquot and store at -20°C. Minimize freezing and thawing.
Note	For research use only
Application notes	ELISA: Peptide ELISA: antibody detection limit dilution 1:32000.IHC: In paraffin embedded Human Testis shows strong cytoplasm staining in spermatogonia. Recommended concentration, 2-4ug/ml.WB: Approx 55-60kDa double band observed in Human Testis, Thyroid and Tonsil lysates (calculated MW of 62.5kDa according to NP_000393.4 and 59.3kDa according to NP_001035810.1). Recommended concentration: 0.03-0.1 µg/ml.
Protein Sequence	STNSDDVRDEKVK
Clonality	Polyclonal
MW	62.5, 59.3
Entrez	2539
Dilution Range	ELISA: 1:32000, WB: 0.03-0.1 µg/ml, IHC-P: 2.5 µg/ml
Expiration Date	12 months from date of receipt.



Western blot analysis of Human Testis ly...



Immunohistochemical staining of paraffin...



Immunohistochemical staining of paraffin...