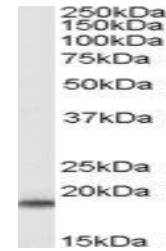


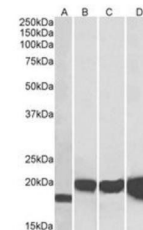
Product Datasheet

SOD1 antibody (orb19518)

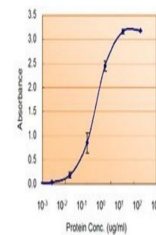
Description	Goat polyclonal antibody to SOD1
Species/Host	Goat
Reactivity	Canine, Human, Mouse, Rat
Conjugation	Unconjugated
Tested Applications	ELISA, IF, WB
Target	SOD1
Preservatives	Supplied at 0.5 mg/ml in Tris saline, 0.02% sodium azide, pH 7.3 with 0.5% bovine serum albumin. Aliquot and store at -20°C. Minimize freezing and thawing.
Storage	Aliquot and store at -20°C. Minimize freezing and thawing.
Note	For research use only
Application notes	ELISA: Peptide ELISA: antibody detection limit dilution 1:8000.WB: Approx 18kDa band observed in Mouse Brain and Rat Spinal Cord lysates (calculated MW of 15.9kDa according to Human NP_000445.1, Mouse NP_035564.1 and Rat NP_058746.1). Recommended concentration: 0.01-0.03 µg/ml.
Protein Sequence	SRKHGGPKDEERH
Clonality	Polyclonal
MW	15.9
Entrez	6647
Dilution Range	ELISA: 1:8000, WB: 0.01-0.03 µg/ml, IHC-P: 10 µg/ml
Expiration Date	12 months from date of receipt.



orb19518 (0.02ug/ml) staining of Mouse B...



Western blot analysis of NIH3T3 (Lane 1)...



Line graph illustrates about the Ag-Ab r...