
Product Datasheet

SORBS1 antibody (orb19512)

Description

Goat polyclonal antibody to SORBS1


Species/Host

Goat

Reactivity

Human, Mouse

Conjugation

Unconjugated

Tested

ELISA, IHC

Applications

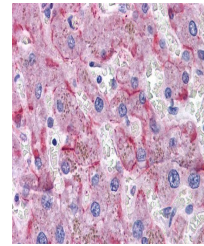
Immunohistochemical staining of Human Pa...

Target

SORBS1/ponsin (internal region)

Preservatives

Supplied at 0.5 mg/ml in Tris saline, 0.02% sodium azide, pH 7.3 with 0.5% bovine serum albumin. Aliquot and store at -20°C. Minimize freezing and thawing.



Immunohistochemical staining of Human Li...

Storage

Aliquot and store at -20°C. Minimize freezing and thawing.

Note

For research use only

Application notes

ELISA: Peptide ELISA: antibody detection limit dilution 1:32000. WB: Preliminary experiments gave an approx 65kDa band in Human Adipose lysates after 0.3 µg/ml antibody staining. Please note that currently we cannot find an explanation in the literature for the band we observe given the calculated size of 76.6kDa according to NP_006425.2 and higher sizes for other isoforms. The 65kDa band was successfully blocked by incubation with the immunizing peptide. We would appreciate any feedback from people in the field - have any results been reported with other antibodies/lysates Have any further splice variants/modified forms been reported

Protein Sequence

SERNDWEPPDKKVD

Clonality

Polyclonal

MW

76.6; 90.2; 142; 127; 101; 87.2; 83.0

Entrez
[10580](#)
Dilution Range

ELISA: 1:32000, WB: 0.3 µg/ml, IHC-P: 3.75 µg/ml

Expiration Date

12 months from date of receipt.