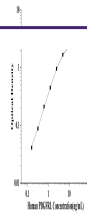

Product Datasheet

Human PDGFRL(Platelet Derived Growth Factor Receptor Like Protein) ELISA Kit (orb1949923)

Description

Human PDGFRL(Platelet Derived)


Reactivity ELISA Kit

Reactivity Human

Range 0.16-10ng/mL

Target PDGFRL

Note For research use only

Application notes This ELISA kit uses the Sandwich-ELISA principle. The micro ELISA plate provided in this kit has been pre-coated with an antibody specific to Human PDGFRL. Standards or samples are added to the micro ELISA plate wells and combined with the specific antibody. Then a biotinylated detection antibody specific for Human PDGFRL and Avidin-Horseradish Peroxidase (HRP) conjugate are added successively to each micro plate well and incubated. Free components are washed away. The substrate solution is added to each well. Only those wells that contain Human PDGFRL, biotinylated detection antibody and Avidin-HRP conjugate will appear blue in color. The enzyme-substrate reaction is terminated by the addition of stop solution and the color turns yellow. The optical density (OD) is measured spectrophotometrically at a wavelength of 450 nm \pm 2 nm. The OD value is proportional to the concentration of Human PDGFRL. You can calculate the concentration of Human PDGFRL in the samples by comparing the OD of the samples to the standard curve.

Sample Types serum, plasma, Tissue homogenate and Other biological samples

Uniprot ID [Q15198](#)

Sensitivity 0.1 ng/mL

Expiration Date Please enquire.