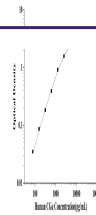

Product Datasheet

Human CG α (Chorionic Gonadotropin Alpha Polypeptide) ELISA Kit (orb1949824)

Description

 Human CG α (Chorionic Gonadotropin)

Reactivity

Human

Range

78.13-5000pg/mL

Target

 CG α
Note

For research use only

Application notes

This ELISA kit uses the Sandwich-ELISA principle. The micro ELISA plate provided in this kit has been pre-coated with an antibody specific to Human CG α . Standards or samples are added to the micro ELISA plate wells and combined with the specific antibody. Then a biotinylated detection antibody specific for Human CG α and Avidin-Horseradish Peroxidase (HRP) conjugate are added successively to each micro plate well and incubated. Free components are washed away. The substrate solution is added to each well. Only those wells that contain Human CG α , biotinylated detection antibody and Avidin-HRP conjugate will appear blue in color. The enzyme-substrate reaction is terminated by the addition of stop solution and the color turns yellow. The optical density (OD) is measured spectrophotometrically at a wavelength of 450 nm \pm 2 nm. The OD value is proportional to the concentration of Human CG α . You can calculate the concentration of Human CG α in the samples by comparing the OD of the samples to the standard curve.

Sample Types

serum, plasma, Tissue homogenate and Other biological samples

Uniprot ID
P01215
Sensitivity

46.88 pg/mL

Expiration Date

Please enquire.