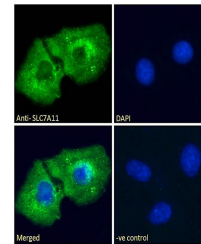


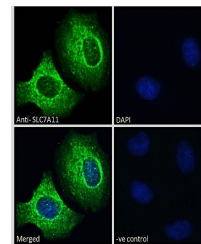
## Product Datasheet

### SLC7A11 antibody (orb19488)

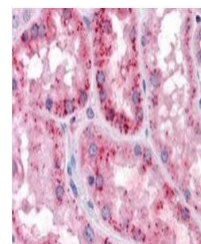
<b>Description</b>	Goat polyclonal antibody to SLC7A11
<b>Species/Host</b>	Goat
<b>Reactivity</b>	Human
<b>Conjugation</b>	Unconjugated
<b>Tested Applications</b>	ELISA, IF
<b>Target</b>	SLC7A11
<b>Preservatives</b>	Supplied at 0.5 mg/ml in Tris saline, 0.02% sodium azide, pH 7.3 with 0.5% bovine serum albumin. Aliquot and store at -20°C. Minimize freezing and thawing.
<b>Storage</b>	Aliquot and store at -20°C. Minimize freezing and thawing.
<b>Note</b>	For research use only
<b>Application notes</b>	ELISA: Peptide ELISA: antibody detection limit dilution 1:128000.WB: Approx 50kDa band observed in Human Spleen and Human Thymus lysates (calculated MW of 55.4kDa according to NP_055146.1). Recommended concentration: 0.02-0.06 µg/ml.
<b>Protein Sequence</b>	KGQTQNFKDAFSGRD
<b>Clonality</b>	Polyclonal
<b>MW</b>	55.4
<b>Entrez</b>	<a href="#">23657</a>
<b>Dilution Range</b>	ELISA: 1:32000, IHC-P: 10 µg/ml
<b>Expiration Date</b>	12 months from date of receipt.



Immunofluorescence analysis of HepG2 cell...



Immunofluorescence analysis of A549 cell...



Immunohistochemical staining of Human Ki...