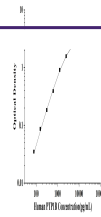

Product Datasheet

**Human PTP1B(protein tyrosine phosphatase 1B)
ELISA Kit (orb1947927)**

Description

Human PTP1B(protein tyrosine


Reactivity

Human

Range

78.13-5000pg/mL

Target

PTP1B

Note

For research use only

Application notes

This ELISA kit uses the Sandwich-ELISA principle. The micro ELISA plate provided in this kit has been pre-coated with an antibody specific to Human PTP1B. Standards or samples are added to the micro ELISA plate wells and combined with the specific antibody. Then a biotinylated detection antibody specific for Human PTP1B and Avidin-Horseradish Peroxidase (HRP) conjugate are added successively to each micro plate well and incubated. Free components are washed away. The substrate solution is added to each well. Only those wells that contain Human PTP1B, biotinylated detection antibody and Avidin-HRP conjugate will appear blue in color. The enzyme-substrate reaction is terminated by the addition of stop solution and the color turns yellow. The optical density (OD) is measured spectrophotometrically at a wavelength of 450 nm \pm 2 nm. The OD value is proportional to the concentration of Human PTP1B. You can calculate the concentration of Human PTP1B in the samples by comparing the OD of the samples to the standard curve.

Sample Types

serum, plasma, Tissue homogenate and Other biological samples

Uniprot ID
P18031
Sensitivity

46.88 pg/mL

Expiration Date

Please enquire.