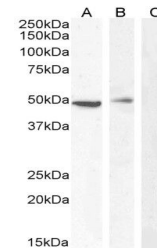


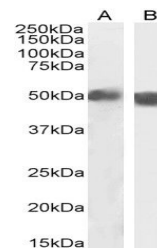
Product Datasheet

TBC1D10C antibody (orb19475)

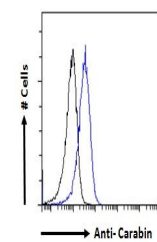
Description	Goat polyclonal antibody to TBC1D10C
Species/Host	Goat
Reactivity	Canine, Human, Mouse, Porcine, Rat
Conjugation	Unconjugated
Tested Applications	ELISA, FC, WB
Target	Carabin / TBC1D10C
Preservatives	Supplied at 0.5 mg/ml in Tris saline, 0.02% sodium azide, pH 7.3 with 0.5% bovine serum albumin. Aliquot and store at -20°C. Minimize freezing and thawing.
Storage	Aliquot and store at -20°C. Minimize freezing and thawing.
Note	For research use only
Application notes	ELISA: Peptide ELISA: antibody detection limit dilution 1:128000.WB: Preliminary experiments in Human Tonsil, Thymus and Peripheral Mononucleocytes lysates gave no specific signal but low background (at antibody concentration up to 1 µg/ml). We would appreciate any feedback from people in the field - have any results been reported with other antibodies/lysates
Protein Sequence	PRRKPQTRGKTFH
Clonality	Polyclonal
MW	49.7
Entrez	374403
Dilution Range	ELISA: 1:128000, WB: 0.3-2 µg/ml, IHC-P: 10ug/ml
Expiration Date	12 months from date of receipt.



WB analysis of Jurkat (A), PBM (B) and A...



WB analysis of Human Spleen (A) and Mous...



Flow cytometric analysis of Jurkat cells...