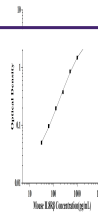


---

## Product Datasheet

### Mouse IL8R $\beta$ (Interleukin 8 Receptor Beta) ELISA Kit (orb1947060)

**Description**

 Mouse IL8R $\beta$ (Interleukin 8 Receptor Beta)

**Reactivity**

Mouse

**Range**

31.25-2000pg/mL

**Target**

 IL8R $\beta$ 
**Note**

For research use only

**Application notes**

This ELISA kit uses the Sandwich-ELISA principle. The micro ELISA plate provided in this kit has been pre-coated with an antibody specific to Mouse IL8R $\beta$ . Standards or samples are added to the micro ELISA plate wells and combined with the specific antibody. Then a biotinylated detection antibody specific for Mouse IL8R $\beta$  and Avidin-Horseradish Peroxidase (HRP) conjugate are added successively to each micro plate well and incubated. Free components are washed away. The substrate solution is added to each well. Only those wells that contain Mouse IL8R $\beta$ , biotinylated detection antibody and Avidin-HRP conjugate will appear blue in color. The enzyme-substrate reaction is terminated by the addition of stop solution and the color turns yellow. The optical density (OD) is measured spectrophotometrically at a wavelength of 450 nm  $\pm$  2 nm. The OD value is proportional to the concentration of Mouse IL8R $\beta$ . You can calculate the concentration of Mouse IL8R $\beta$  in the samples by comparing the OD of the samples to the standard curve.

**Sample Types**

serum, plasma, Tissue homogenate and Other biological samples

**Uniprot ID**
**P35343**
**Sensitivity**

18.75 pg/mL

**Expiration Date**

Please enquire.