
Product Datasheet

Rat gp130(Glucopein 130) ELISA Kit (orb1946993)

Description

Rat gp130(Glucoprotein 130) ELISA Kit

Reactivity

Rat

Range

0.16-10ng/mL

Target

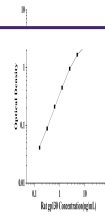
gp130

Note

For research use only

Application notes

This ELISA kit uses the Sandwich-ELISA principle. The micro ELISA plate provided in this kit has been pre-coated with an antibody specific to Rat gp130. Standards or samples are added to the micro ELISA plate wells and combined with the specific antibody. Then a biotinylated detection antibody specific for Rat gp130 and Avidin-Horseradish Peroxidase (HRP) conjugate are added successively to each micro plate well and incubated. Free components are washed away. The substrate solution is added to each well. Only those wells that contain Rat gp130, biotinylated detection antibody and Avidin-HRP conjugate will appear blue in color. The enzyme-substrate reaction is terminated by the addition of stop solution and the color turns yellow. The optical density (OD) is measured spectrophotometrically at a wavelength of 450 nm \pm 2 nm. The OD value is proportional to the concentration of Rat gp130. You can calculate the concentration of Rat gp130 in the samples by comparing the OD of the samples to the standard curve.


Sample Types

Serum, Plasma, Tissue homogenate and Other biological samples

Uniprot ID
P40190
Sensitivity

0.1ng/mL

Expiration Date

Please enquire.