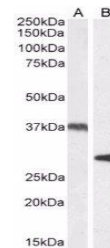


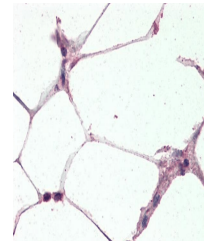
## Product Datasheet

### UCP2 antibody (orb19468)

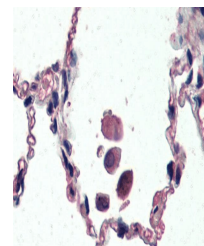
<b>Description</b>	Goat polyclonal antibody to UCP2
<b>Species/Host</b>	Goat
<b>Reactivity</b>	Canine, Human, Mouse, Rat
<b>Conjugation</b>	Unconjugated
<b>Tested Applications</b>	ELISA, IF, WB
<b>Target</b>	Uncoupling protein 2 / UCP2
<b>Preservatives</b>	Supplied at 0.5 mg/ml in Tris saline, 0.02% sodium azide, pH 7.3 with 0.5% bovine serum albumin. Aliquot and store at -20°C. Minimize freezing and thawing.
<b>Concentration</b>	0.5mg/ml
<b>Storage</b>	Aliquot and store at -20°C. Minimize freezing and thawing.
<b>Note</b>	For research use only
<b>Application notes</b>	ELISA: Peptide ELISA: antibody detection limit dilution 1:4000.WB: Approx 35kDa band observed in Human Liver lysates (calculated MW of 33.2kDa according to NP_003346.2). Recommended concentration: 0.2-1 µg/ml..
<b>Protein Sequence</b>	DSVKQFYTKGSEH
<b>Clonality</b>	Polyclonal
<b>MW</b>	33.2
<b>Entrez</b>	<b>7351</b>
<b>Dilution Range</b>	ELISA: 1:128000, WB: 0.3-1 µg/ml, IHC-P: 10 µg/ml
<b>Expiration Date</b>	12 months from date of receipt.



Western blot analysis of Rat Adipose (La...



Immunohistochemical staining of Human Adipose tissue



Immunohistochemical staining of Human Lung tissue