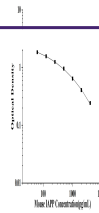

Product Datasheet

Mouse IAPP(Islet Amyloid Polypeptide) ELISA Kit (orb1946773)

Description

Mouse IAPP(Islet Amyloid Polypeptide) ELISA


Reactivity

Mouse

Range

62.5-4000pg/mL

Target

IAPP

Note

For research use only

Application notes

This ELISA kit uses the Competitive-ELISA principle. The micro ELISA plate provided in this kit has been pre-coated with Mouse IAPP. During the reaction, Mouse IAPP in the sample or standard competes with a fixed amount of Mouse IAPP on the solid phase supporter for sites on the Biotinylated Detection Ab specific to Mouse IAPP. Excess conjugate and unbound sample or standard are washed away, and Avidin-Horseradish Peroxidase (HRP) conjugate are added to each micro plate well and incubated. Then a TMB substrate solution is added to each well. The enzyme-substrate reaction is terminated by the addition of stop solution and the color turns from blue to yellow. The optical density (OD) is measured spectrophotometrically at a wavelength of 450 nm \pm 2 nm. The concentration of Mouse IAPP in tested samples can be calculated by comparing the OD of the samples to the standard curve.

Sample Types

serum, plasma, Tissue homogenate and Other biological samples

Uniprot ID
[P12968](#)
Sensitivity

37.5 pg/mL

Expiration Date

Please enquire.