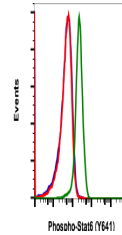


## Product Datasheet

# Phospho-Stat6 (Tyr641) (G12) rabbit mAb FITC conjugate Antibody (orb1946354)

<b>Description</b>	Phospho-Stat6 (Tyr641) (G12) rabbit mAb FITC conjugate Antibody
<b>Reactivity</b>	Human, Mouse
<b>Conjugation</b>	FITC
<b>Tested Applications</b>	FC
<b>Immunogen</b>	A synthetic phospho-peptide corresponding to residues surrounding Tyr641 of human phospho Stat6
<b>Preservatives</b>	1X PBS, 0.09% NaN3, 0.2% rAlbumin
<b>Storage</b>	2-8°C
<b>Note</b>	For research use only
<b>Isotype</b>	Rabbit IgGk
<b>Clonality</b>	Monoclonal
<b>Uniprot ID</b>	<b>P42226</b>
<b>Dilution Range</b>	For flow cytometric staining, the suggested use of this reagent is 5 µL per million cells or 5 µL per 100 µL of staining volume. It is recommended that the reagent be titrated for optimal performance for each application.
<b>Expiration Date</b>	12 months from date of receipt.



Flow cytometric analysis of U937 cells U...