
Product Datasheet

**Phospho-p38 MAPK (Thr180/Tyr182) (E3) rabbit
mAb Antibody (orb1946350)**

Description

Phospho-p38 MAPK (Thr180/Tyr182) (E3) rabbit

Reactivity

Human, Mouse, Rat

Conjugation

Unconjugated

Tested Applications

FC

Immunogen

A synthetic phospho-peptide corresponding to residues surrounding Thr180/Tyr182 of human phospho p38 MAPK.

Preservatives

1X PBS, 0.02% NaN3, 50% Glycerol, 0.1% rAlbumin

Concentration

0.5 mg/ml

Storage

-20°C

Note

For research use only

Isotype

Rabbit IgGk

Clonality

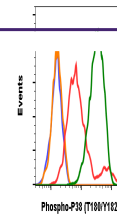
Monoclonal

Uniprot ID
Q16539
Dilution Range

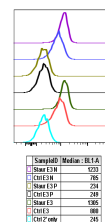
1µg/mL - 0.001µg/mL. It is recommended that the reagent be titrated for optimal performance for each application. See product image legends for additional information.

Expiration Date

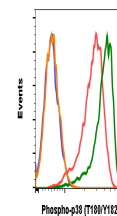
12 months from date of receipt.



Flow cytometric analysis of C2C12 cells ...



Peptide blocking flow cytometric analysis...



Flow cytometric analysis of A431 cells S...